

## Recommendations for DriveGate users

The following arrangements describe the optimum use of the DriveGate with regard to the performance. Please coordinate the changes of your settings in the Browser with your IT organization. In no event will SEW-EURODRIVE be liable for any consequential damages caused by the setting options described in the following.

### I. Recommended browser settings

#### 1. Recommended browser settings (Microsoft Internet Explorer 6.0 and 7.0):

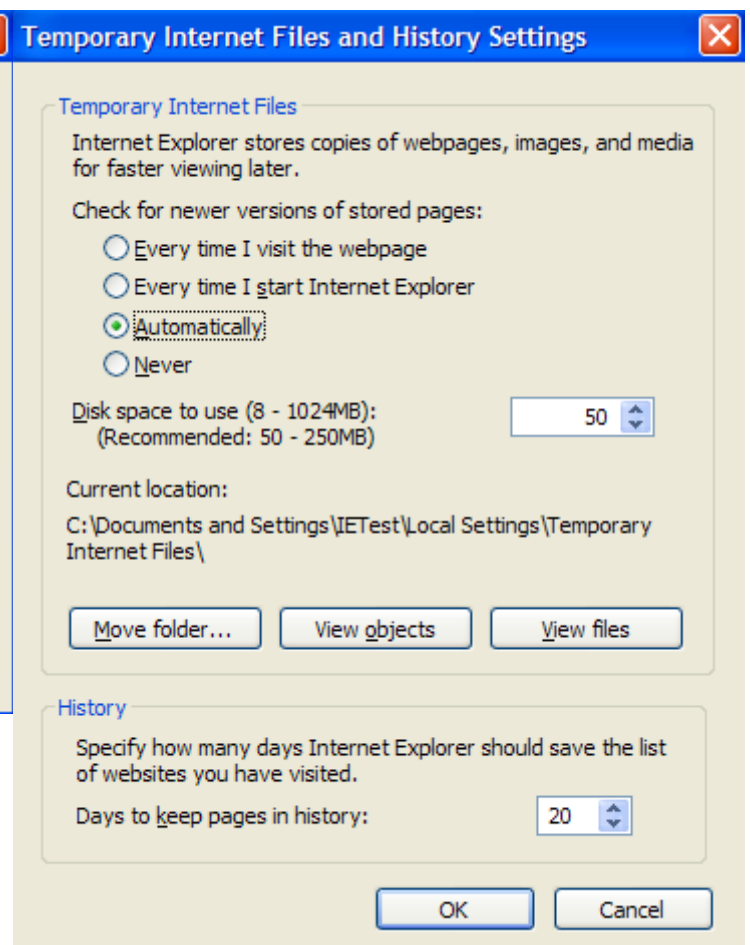
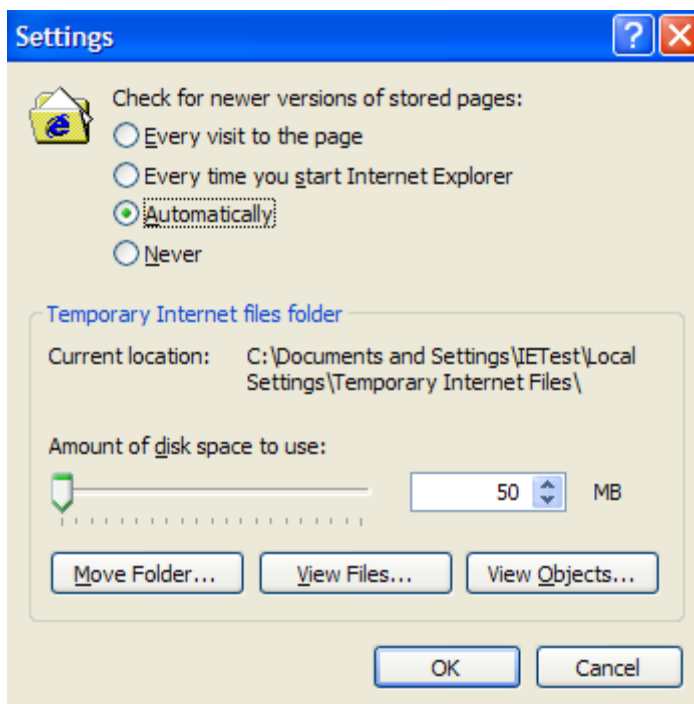
In the Internet Explorer, go to [Options] → [Internet options...] and make the following settings:

##### a. Change the following in the [General] → [Settings] (IE7.0: Browsing history [Settings]) tab:

- i. Minimum size of the cache: 50 MB
- ii. Check for newer versions of stored pages: automatically

Internet Explorer 6.0

Internet Explorer 7.0

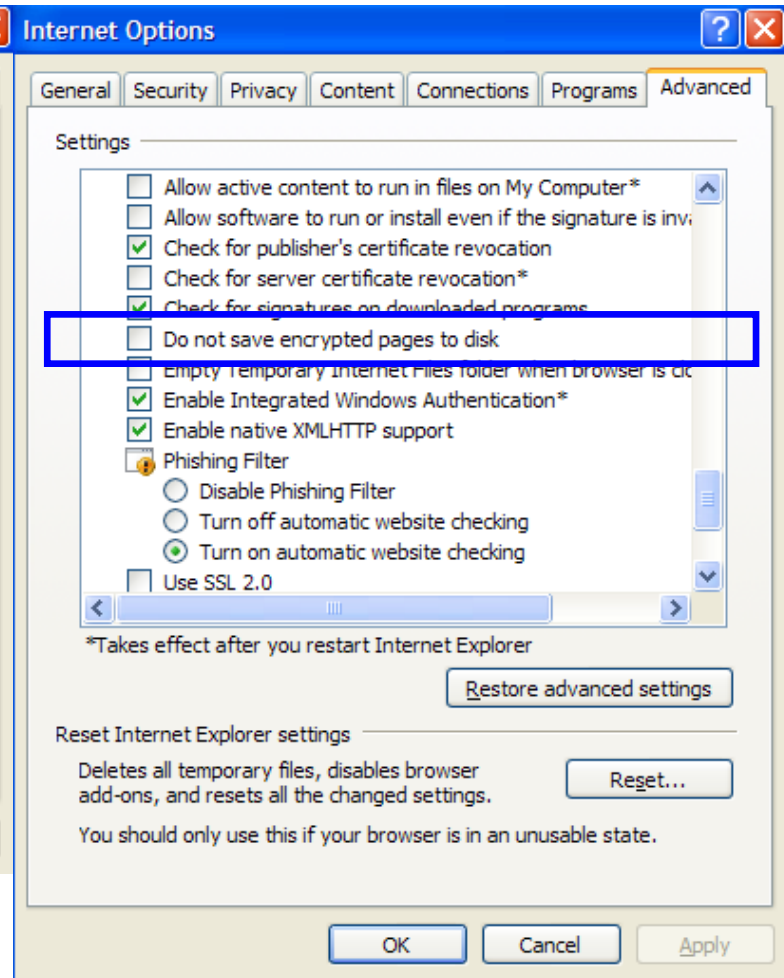
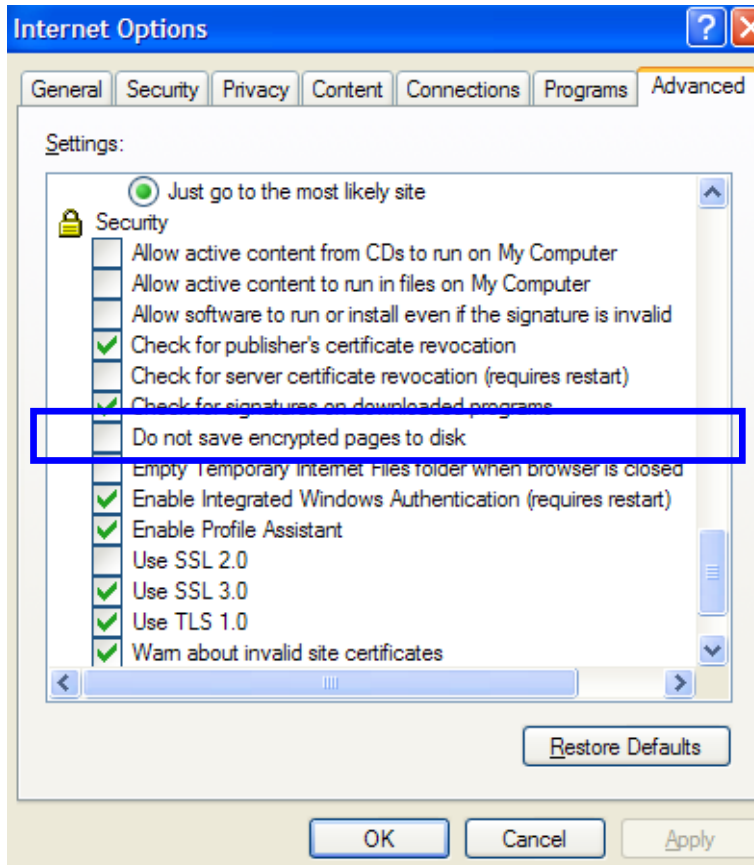


**b. Place the following checks in the [Advanced] tab:**

- i. Allow saving of encrypted pages (no check)

Internet Explorer 6.0

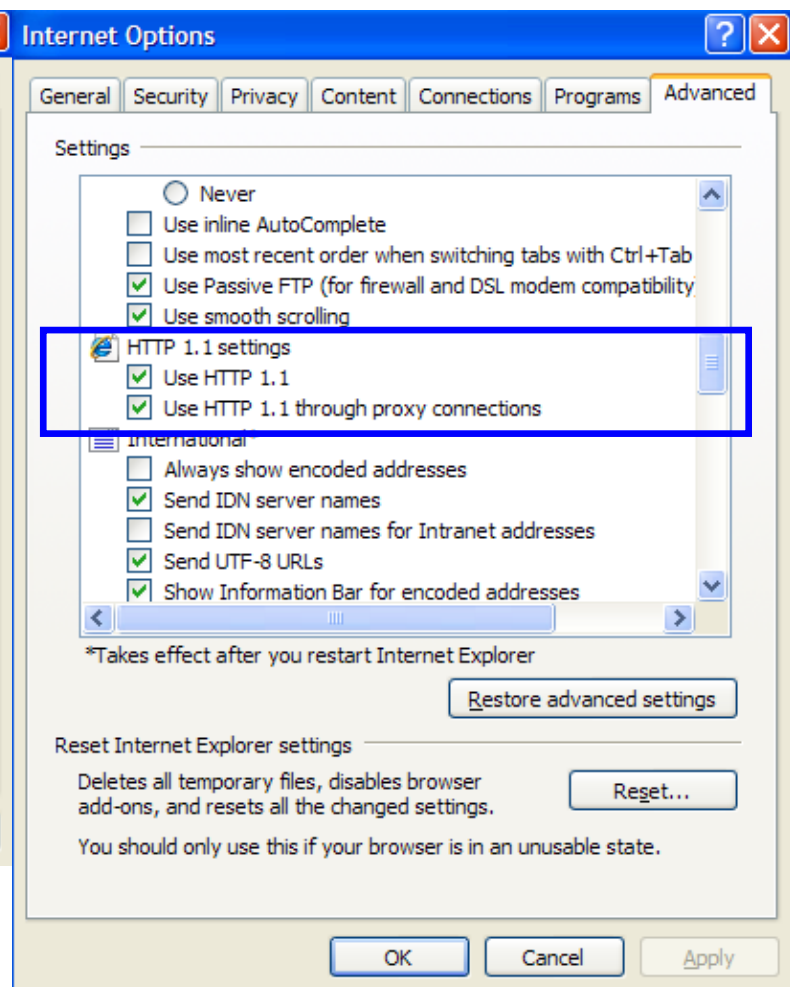
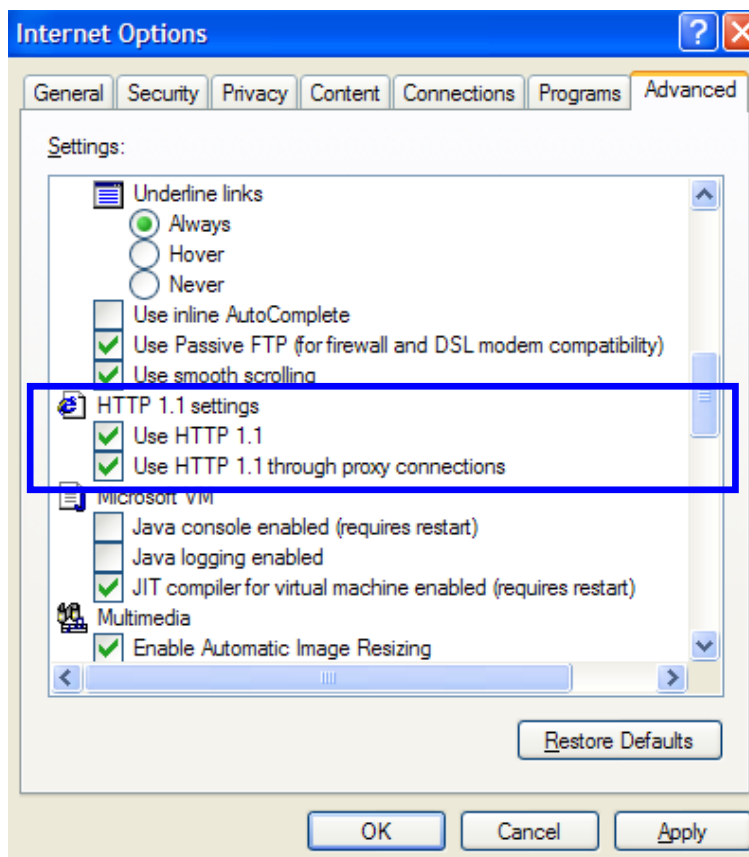
Internet Explorer 7.0



- ii. For compression, allow the use of HTTP 1.1
- iii. You also must allow the usage of HTTP 1.1 through proxy connections if you use a proxy for Internet access.

Internet Explorer 6.0

Internet Explorer 7.0

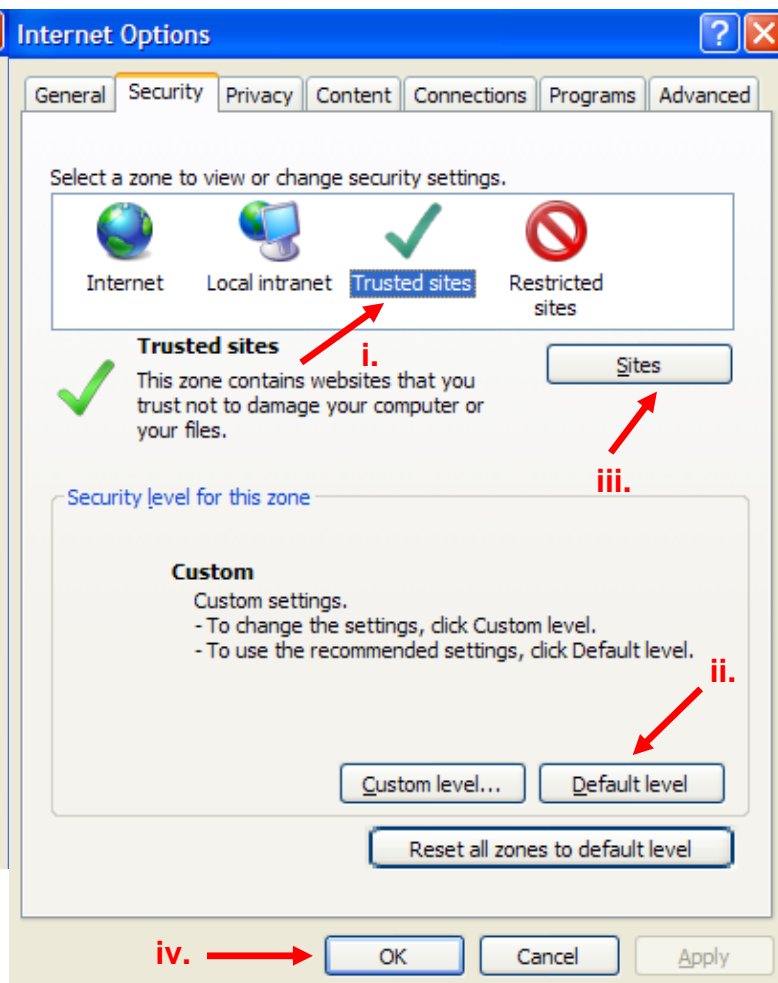
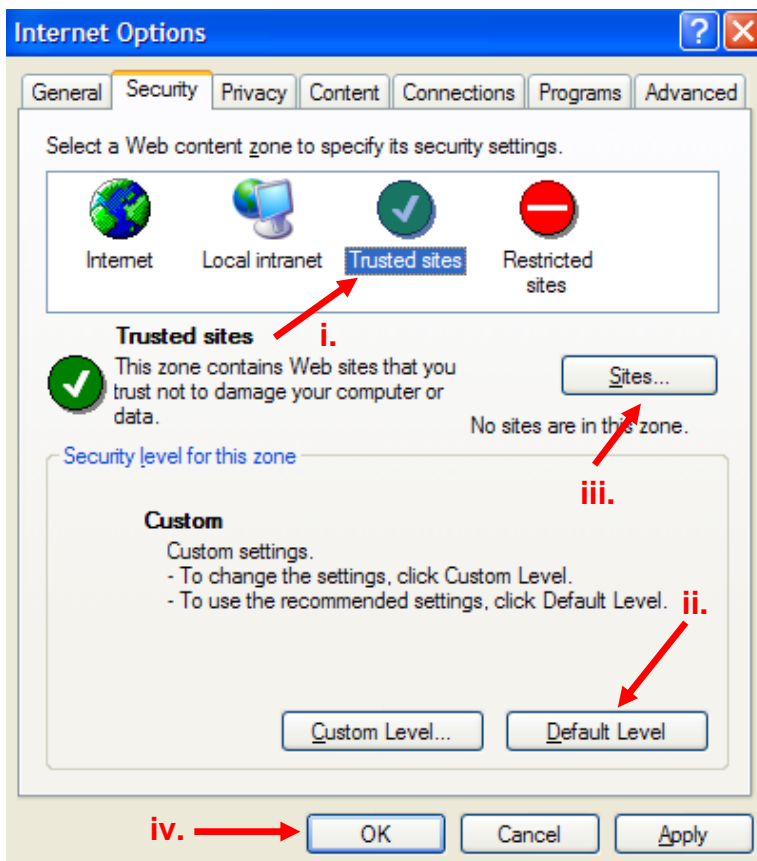


**c. Make the following settings on the [Security] tab**

- i. Choose "Trusted sites"
- ii. Reset to [Default level]

Internet Explorer 6.0

Internet Explorer 7.0



- iii. Under [Sites...], add the following addresses to the "Trusted sites" zone:
  - II. *https://portal.drivegate.biz/irj/portal/*
  - III. *http://web.drivegate.biz*
  - IV. *http://www.drivegate.biz/*

- iv. Confirm your settings with [OK] and save

## II. Recommended proxy settings

- a. For compression, the proxy must completely support HTTP 1.1 (e. g. MS ISA2004)

## **In case of questions please contact:**

SEW-EURODRIVE GmbH & Co KG  
DriveGate-Team  
Ernst-Blickle-Straße 42  
D-76646 Bruchsal  
Germany

E-mail: [drivegate@sew-eurodrive.de](mailto:drivegate@sew-eurodrive.de)  
Tel. ++49-7251-75-3232